

BODILSON

Fabrics 2024 | v03

Information about the materials

Fabric & foam

Fabrics are made from different textile fibers, most of the time natural fibers. Fabrics have a certain elasticity, with some fabrics being more stretchy than others. When using a sofa or chair, the fabric will start to fold, which is normal. The folding is not solely caused by the fabric but also due to the foam becoming softer. Foam is made from oil, which is chemically processed to create an elastic material. It is blown up into a large block with cells filled with air. When the furniture is used, these cells can crack, causing the foam to become softer and provide more comfort. On average, the filling will decrease in hardness and stabilize at around 85% compared to its initial state.

With new fabrics, the first fibers may come off and form small balls, a phenomenon known as pilling. This is a normal characteristic of natural fabrics and does not affect the material's quality. It is possible to remove the pills by using a small machine to skim the fabric. However, it is common for pilling to occur when using furniture. The level of pilling can vary depending on the type of fibers used in the fabric. It is often categorized on a scale of 1 to 5, where 1 represents very strong pilling and 5 indicates hardly any pilling.

The lightfastness of a fabric is also categorized on a scale from 1 to 6, where 1 represents strong color changing and 6 indicates no color changing. However, the degree of color fading or changing depends on the location of the furniture in the house. If the furniture is placed on the south side where it receives direct daylight and sunlight throughout the day, even fabrics labeled as 6 may lighten. To minimize this effect, it is recommended to use curtains or shutters to weaken the intensity of light on the fabric.

Leather & foam

Leather is a 100% natural product. The leather, Scarpe, that we use is full aniline leather, which means it is kept natural and does not have a protective layer. It is sensitive to moisture, oil, and other fluids or grease, which can be easily absorbed by the leather. The leather may show insect bites, growing scars, etc. Over time, the leather will naturally lighten in color, and exposure to sunlight will accelerate this process.

Leather has its own inherent elasticity, and with use, it may develop folds. This is normal. The folding is not solely caused by the leather but also due to the foam becoming softer. Foam is made from oil, which undergoes a chemical process to become elastic. It is blown up into a large block with cells filled with air. When the furniture is used, these cells can crack, resulting in the foam becoming softer and providing increased comfort. On average, the filling will decrease in hardness and stabilize at around 85% compared to its initial state.

Wood

Wood is a natural product that naturally expands and contracts in response to the environmental conditions in your home. Our tables are crafted from solid wood. To prevent the wood from warping or splitting, it is important to maintain a consistent humidity level in your home, ideally between 50% and 75%. Avoid placing wooden furniture near heat sources such as radiators or fireplaces.

Color variations from the photos shown in this price list are possible. Sizes and images are subject to typesetting and printing errors. Bodilson reserves the right to make improvements to models, sizes, and materials. Submitted fabrics are not accepted.

Overview of measurement scales

Lightfastness scale 1 t/m 8

1 = high discoloration 8 = no discoloration

Martindale

> 10.000 decorative use
> 15.000 normal use
> 20.000 intensive use

Rubness scale 1 t/m 5

1 = strong rubness 5 = hardly rubness

Declaration of composition of substances

ac = acryl	pa = polyamide
co = katoen	pc = polyacryl
el = elasthan	pe = polyethyleen
ju = jute	pl = polyester
li = linnen	pp = polypropyleen
lr = leer	pes = polyester
ly = lycra	pu = polyurethaan
ma = modeacryl	ps = suède
me = metal	se = zijde
ny = nylon	vi = viscose
of = other fibres	wo = wol

CAT 1

Fabric | Sabbia

Sales price: €40,- per linear meter
Composition: 76% polyester, 16% viscose, 8% linen
Martindale: 100.000
Lightfastness: 4-5
Pilling: 5



4 | Sand
BD000184



11 | Cream
BD000179



20 | Stone
BD000183



45 | Grey
BD000182



520 | Mustard
BD000186



751 | Olive
BD000181

CAT 1

Fabric | Miles

Sales price: €40,- per linear meter
Composition: 100% polyester
Martindale: 38.000
Lightfastness: 4-5
Pilling: 4-5
Stain resistant treated



1 | Natural
BD000127



05 | Beige
BD000136



10 | Liver
BD000130



16 | Caramel
BD000128



59 | Moss
BD000139



113 | Sesame
BD000135



124 | Shitake
BD000137



149 | Steel
BD000131



192 | Wenge
BD000138

CAT 1

Fabric | Sage

Sales price: €40,- per linear meter
Composition: 100% polyester
Martindale: 95.000
Lightfastness: 4-5
Pilling: 4-5
Stain resistant treated



01 | Nature
BD000190



09 | Blue
BD000189



11 | Cream
BD000191



44 | Steel
BD000197



45 | Grey
BD000193



46 | Antracite
BD000192



120 | Light Grey
BD000194



121 | Zilver
BD000196



520 | Mustard
BD000199



751 | Olive
BD000198

CAT 1

Fabric | Ment

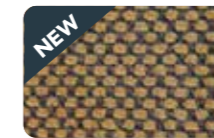
Sales price: €40,- per linear meter
Composition: 90% polyester, 10% polyacrylic
Martindale: 50.000
Lightfastness: 4-5
Pilling: 4



01 | Natural
BD000092



02 | Cream
BD000100



06 | Mustard
BD000098



40 | Ash Grey
BD000093



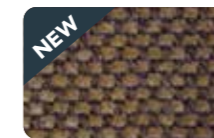
60 | Light Grey
BD000095



66 | Graphite
BD000102



88 | Turtle
BD000096



116 | Bronze
BD000099



126 | Copper
BD000101

CAT 1

Fabric | Moss

Sales price: €40,- per linear meter
Composition: 100% polyester
Martindale: 30.000
Lightfastness: 5
Pilling: 4-5



01 | Natural
BD000785



02 | Cream
BD000784



06 | Mustard
BD000789



96 | Hazel
BD000787



149 | Steel
BD000786



206 | Thyme
BD000788



207 | Jungle
BD000790

CAT 1

Fabric | Viborg

Sales price: €40,- per linear meter
Composition: 100% polyester
Martindale: 80.000
Lightfastness: 5
Pilling: 3-4



Ash
BD000272



Lima
BD000274



Mud
BD000271



Nata
BD000267



Safira
BD000273



Sand
BD000268



Toffee
BD000269



Truffle
BD000270

CAT 1

Fabric | Zenz

Sales price: €40,- per linear meter
Composition: 100% polyester
Martindale: 88.000
Lightfastness: 5
Pilling: 5



03 | Sand
BD000154



05 | Beige
BD000154



28 | Cognac
BD000154



59 | Moss
BD000154



84 | Clay
BD000154



110 | Linen
BD000154



149 | Steel
BD000155



156 | Hunter
BD000154



175 | Oyster
BD000154



211 | Latte
BD000154

CAT 1

Fabric | Malmo

Sales price: €40,- per linear meter
Composition: 100% polyester
Martindale: 25.000
Lightfastness: 5
Pilling: 4



01 | Ivory
BD000768



02 | Sand
BD000769



03 | Taupe
BD000770



04 | Beige
BD000771



05 | Olive
BD000772



10 | Bronze
BD000773



11 | Cappuccino
BD000774



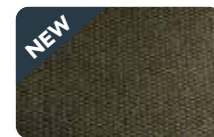
12 | Gold
BD000775



13 | Mustard
BD000776



15 | Curry
BD000777



16 | Moss
BD000778



17 | Forest
BD000779



18 | Aqua
BD000780



21 | Denim
BD000781



26 | Silver Grey
BD000782



27 | Light Grey
BD000783

CAT 1

Fabric | Asker

Sales price: €40,- per linear meter
Composition: 90 % polyester, 5% cotton, 5% Polyacryl
Martindale: 75.000
Lightfastness: 5
Pilling: 4



01 | Natural
BD000648



05 | Beige
BD000650



84 | Clay
BD000649



101 | Ivory
BD000646



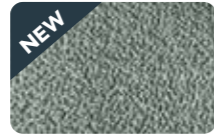
116 | Bronze
BD000654



149 | Steel
BD000651



186 | Champagne
BD000647



203 | Sage
BD000652



206 | Thyme
BD000653

CAT 1

Fabric | Larvik

Sales price: €40,- per linear meter
Composition: 100% polyester
Martindale: 100.000
Lightfastness: 4-5
Pilling: 4-5



15 | Brown
BD000762



16 | Caramel
BD000764



49 | Navy
BD000766



51 | Khaki
BD000759



65 | Grey
BD000758



67 | Anthracite
BD000757



81 | Coffee
BD000763



156 | Hunter
BD000765



158 | Niagara
BD000767



181 | Stone
BD000761



03 | Sand
BD000760

CAT 1

Fabric | Halmstad

Sales price: €40,- per linear meter
Composition: 100% polyester
Martindale: 85.000
Lightfastness: 5
Pilling: 4-5



02 | Cream
BD000747



14 | Army
BD000753



28 | Cognac
BD000756



66 | Graphite
BD000750



84 | Clay
BD000748



109 | Desert
BD000749



127 | Brandy
BD000754



170 | Brass
BD000755



206 | Thyme
BD000752



213 | Frost
BD000751

CAT 2

Fabric | Turn

Sales price: €50,- per linear meter
Composition: 80% polyester, 20% cotton
Martindale: 100.000
Lightfastness: 5
Pilling: 5



02 | Taupe
BD000019



04 | Latte
BD000018



05 | Cappuccino
BD000020



07 | Light Grey
BD000017



407 | Gold
BD000022



409 | Bronze
BD000021



509 | Moss
BD000025



511 | Mint
BD000026



601 | Night
BD000023



602 | Ocean Blue
BD000024



801 | Ice Blue
BD000028



811 | Grey
BD000029



908 | Olive
BD000027

CAT 2

Fabric | Relm

Sales price: €50,- per linear meter
Composition: 95% polyester, 5% polyacrylic
Martindale: 50.000
Lightfastness: 4
Pilling: 4



3 | White
BD000010



4 | Cream
BD000011



5 | Sand
BD000012



6 | Coffee
BD000013

CAT 2

Fabric | Certo

Sales price: €50,- per linear meter
Composition: 97% polyester, 3% linen
Martindale: 100.000
Lightfastness: 5
Pilling: 4-5



05 | Beige
BD000149



12 | Taupe
BD000148



15 | Brown
BD000150



65 | Grey
BD000146



67 | Antracite
BD000147



102 | Ecrú
BD000152



133 | Sun
BD000153

CAT 2

Fabric | Costo

Sales price: €50,- per linear meter
Composition: 100% polyester
Martindale: 100.000
Lightfastness: 5
Pilling: 4



01 | Natural
BD000123



06 | Mustard
BD000124



48 | Dark Blue
BD000122



90 | Indigo
BD000125



96 | Hazel
BD000118



123 | Espresso
BD000126



149 | Steel
BD000116



158 | Niagara
BD000121



181 | Stone
BD000117



193 | Eucalyptus
BD000120

CAT 2

Fabric | Ruda

Sales price: €50,- per linear meter
Composition: 100% polyester
Martindale: 100.000
Lightfastness: 4-5
Pilling: 4



01 | Natural
BD000807



05 | Beige
BD000808



10 | Liver
BD000810



12 | Taupe
BD000803



14 | Army
BD000813



15 | Brown
BD000811



60 | Light Grey
BD000805



109 | Desert
BD000809



149 | Steel
BD000806



206 | Thyme
BD000812



216 | Curry
BD000804

CAT 2

Fabric | Nibro

Sales price: €50,- per linear meter
Composition: 32% polyester, 32% viscose, 20% polypropylene, 16% linnen
Martindale: 50.000
Lightfastness: 5
Pilling: 4-5



02 | Ecrú
BD000628



03 | Sand
BD000629



04 | Taupe
BD000629



05 | Mud
BD000631



06 | Coffee
BD000632



09 | Camel
BD000633



10 | Gold
BD000634



11 | Moss
BD000635



13 | Navy
BD000636



14 | Ice blue
BD000637



15 | Silver
BD000638



16 | Light Grey
BD000639

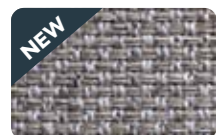


17 | Dark Grey
BD000640

CAT 2

Fabric | Varde

Sales price: €50,- per linear meter
Composition: 88% polyester, 12% polyacrylic
Martindale: 100.000
Lightfastness: 5
Pilling: 4



01 | Natural
BD000158



03 | Sand
BD000159



06 | Mustard
BD000160



53 | Olive
BD000162



79 | Charcoal
BD000165



101 | Ivory
BD000276



110 | Linen
BD000161



125 | Silver
BD000163



156 | Hunter
BD000164

CAT 2

Fabric | Berber

Sales price: €50,- per linear meter
Composition: 100% polyester
Martindale: 70.000
Lightfastness: 5
Pilling: 4-5



06 | Mustard
BD000643



10 | Liver
BD000642



108 | Wood
BD000645



176 | Sepia
BD000644



196 | Shell
BD000641

CAT 3

Fabric | Osby

Sales price: €60,- per linear meter
Composition: 96% polyester, 4% Polyurethaan, backside 100% leather fibres, microsuede knitted
Martindale: 32.000
Lightfastness: 3-4
Pilling: 3-4

This fabric will serve as the substitute for micro leather on page 142.



16 | Caramel
BD000801



60 | Light Grey
BD000793



09 | Camel
BD000802



65 | Grey
BD000791



162 | Forest
BD000797



10 | Liver
BD000800



82 | Almond
BD000799



206 | Thyme
BD000795



15 | Brown
BD000798



84 | Clay
BD000792



156 | Hunter
BD000796



158 | Niagara
BD000794

CAT 3

Fabric | Forte

Sales price: €60,- per linear meter
Composition: 53% polyacrylic, 23% polyester, 13% cotton, 11% wool
Martindale: 35.000
Lightfastness: 6
Pilling: 5



43 | Soft Green
BD000214



45 | Dark Green
BD000215



51 | Coral Red
BD000211



52 | Pebble Stone
BD000212



53 | Espresso
BD000213



62 | Greige
BD000207



72 | Pink
BD000209



92 | Grey
BD000208

CAT 3

Fabric | Bergunda

Sales price: €60,- per linear meter
Composition: 47% Viscose, 23% Cotton, 14% Linnen, 12% polyester, 4% wol
Martindale: 45.000
Lightfastness: 5
Pilling: 4



01 | Ivory
BD000736



03 | Ecrú
BD000737



04 | Zand
BD000738



05 | Beige
BD000739



06 | Hazel
BD000740



07 | Camel
BD000741



08 | Honey
BD000742



09 | Lemon
BD000743



10 | Eucalyptus
BD000744



13 | Silver
BD000745



14 | Stone
BD000746

CAT 4

Fabric | Sole

Sales price: €70,- per linear meter
Composition: 38% cotton, 31% polyacrylic, 14% polyester, 9% linen, 8% viscose
Martindale: 30.000
Lightfastness: 4-5
Pilling: 4



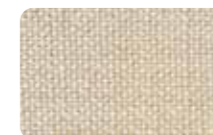
2 | London
BD000036



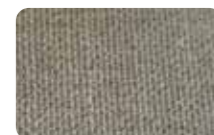
3 | Greige
BD000031



4 | Sasso
BD000030



6 | Juta
BD000033



7 | Palma
BD000035



8 | Taupe
BD000037



11 | Cognac
BD000034

CAT 4

Fabric | Oslo

Sales price: €70,- per linear meter
Composition: 59% polyester, 16% viscose, 17% cotton, 8% linen
Martindale: 40.000
Lightfastness: 5
Pilling: 5



1 | Natural
BD000057



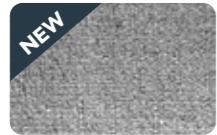
3 | Beige
BD000058



4 | Light Brown
BD000059



5 | Taupe
BD000060



6 | Grey
BD000061



9 | Mustard
BD000063

CAT 4

Fabric | Ruvido

Sales price: €70,- per linear meter
Composition: 40% polyacryl, 20% polyester, 18% cotton, 13% lini
Martindale: 40.000
Lightfastness: 4-5
Pilling: 3-4



1 | Cream
BD000046



3 | Nero
BD000043



6 | Green
BD000045



10 | Sky Blue
BD000047



12 | Taupe
BD000077



13 | Black
BD000048

CAT 4

Fabric | Sura

Sales price: €70,- per linear meter
Composition: 45% Polyester, 33% Cotton, 14% Viscose, 8% Linnen
Martindale: 25.000
Lightfastness: 4-5
Pilling: 4



01 | Silver
BD000814



02 | Ecrú
BD000815



03 | Beige
BD000816



04 | Coffee
BD000817



08 | Forest
BD000818



10 | Moss
BD000819



11 | Bronze
BD000820



15 | Navy
BD000821



19 | Cappuccino
BD000822



20 | Dark Brown
BD000823



22 | Anthracite
BD000824

CAT 4

Fabric | Valberg

Sales price: €70,- per linear meter
Composition: 39% cotton, 32% viscose, 16% linen, 13% polyester
Martindale: 40.000
Lightfastness: 4
Pilling: 3



2 | Sabbie
BD000049



3 | Avorio
BD000050



4 | Taupe
BD000051



10 | Girasole
BD000052



11 | Safari
BD000053



12 | Militare
BD000054



15 | Perla
BD000055



16 | Tufo
BD000056

LTHR 1

Leather | Scarpe

Type of skin: European full anilin wax

Thickness: 1.2–1.4 mm

Lightfastness: 3 (scale 1-8)

Leather Scarpe is a 100% natural leather, with no protection. Moisture, oil, fluids; everything will be visible in the leather. By using the leather it will age and become even more beautiful. Leather Scarpe can vary in colour between each skin. The leather samples are just an indication of how it may look. The leather can have errors like burn marks, insect bites etc. If you want to know the exact colour in which your furniture will be made, please ask for a production leather sample. But we can't tell you what kind of errors the leather could have.

Advise for maintenance:

LCK 60960 KERALUX VINTAGE SET

Maintenance

LCK Nederland has tested the leather types and determined which type of care product is suitable for which type of leather. You can order the products online on www.lcknederland.nl. Bodilson does not sell these products directly to its dealers, this always runs through LCK.

On this site of LCK you can also find a first aid for a stains on leather. The care products do not give a guarantee on the leather, but with proper maintenance to enjoy the furniture longer.

Important basic information for each type of leather; do not put in direct sunlight because of discoloration. And ensure good humidity in the house to prevent dehydration of the leather. Do not place the furniture in the immediate vicinity of a heat source.

LCK Nederland BV

+31 571 270 327

klantenservice@lcknederland.nl

It's not possible to order single leather skins.



16001 | Brown
BD000231



16005 | Beige
BD000226



16006 | Taupe
BD000229



16007 | Deer
BD000234



16008 | Black
BD000227



16014 | Grey
BD000230



16019 | Thyme
BD000236



16022 | Cognac
BD000225



16054 | Bottle Green
BD000233

LTHR 2

Leather | Pelle

Type of skin: Brazilian semi aniline with a natural grain

Thickness: 1.3–1.5 mm

Lightfastness: 3 (scale 1-8)

Leather Pelle is a 100% natural leather, semi aniline. Semi-aniline leather is just a little bit tougher than aniline leather because its surface has been treated with a light coat that contains some pigment, which makes it more soil- and stain-resistant. While it retains the uniqueness of aniline leather, semi-aniline leather has more consistent color and is more resistant to stains. It can stand up to tougher conditions and isn't damaged as easily.

Advise for maintenance:

6000 Keralux® set P

6100 strong protector

Maintenance

LCK Nederland has tested the leather types and determined which type of care product is suitable for which type of leather. You can order the products online on www.lcknederland.nl. Bodilson does not sell these products directly to its dealers, this always runs through LCK.

On this site of LCK you can also find a first aid for a stains on leather. The care products do not give a guarantee on the leather, but with proper maintenance the consumer will enjoy his furniture longer.

Important basic information for each type of leather; do not put these in direct sunlight in connection with discoloration. And ensure good humidity in the house to prevent dehydration of the leather. Do not place the furniture in the immediate vicinity of a heat source.

LCK Nederland BV

+31 571 270 327

klantenservice@lcknederland.nl

It's not possible to order single leather skins.



23001 | Dark Brown
BD000246



23003 | Taupe
BD000244



23004 | Antracite
BD000243



23006 | Sabbia
BD000247



23054 | Bottle Green
BD000248



23056 | Kiwi
BD000245

LTHR 3

Leather | Vidar

Type of skin: European Bull, Aniline finish and soft touch

Thickness: 1.0 - 1.1 mm

Lightfastness: 3

Maintenance

LCK Nederland has tested the leather types and determined which type of care product is suitable for which type of leather. You can order the products online on www.lcknederland.nl. Bodilson does not sell these products directly to its dealers, this always runs through LCK.

On this site of LCK you can also find a first aid for a stains on leather. The care products do not give a guarantee on the leather, but with proper maintenance the consumer will enjoy his furniture longer.

Important basic information for each type of leather; do not put these in direct sunlight in connection with discoloration. And ensure good humidity in the house to prevent dehydration of the leather. Do not place the furniture in the immediate vicinity of a heat source.

LCK Nederland BV

+31 571 270 327

klantenservice@lcknederland.nl

It's not possible to order single leather skins.



31002 | Cognac
BD000255



31003 | Elephant
BD000253



31006 | Beige
BD000250



31008 | Black
BD000242



31010 | White
BD000249



31021 | Blizzard
BD000251



31059 | Red Brown
BD000257



31076 | Terra
BD000256



31113 | Taupe
BD000252

LTHR 4

Leather | Runa

Type of skin: European Bull, Aniline finish and soft touch

Thickness: 0.9 - 1.1 mm

Lightfastness: 5

Maintenance

LCK Nederland has tested the leather types and determined which type of care product is suitable for which type of leather. You can order the products online on www.lcknederland.nl. Bodilson does not sell these products directly to its dealers, this always runs through LCK.

On this site of LCK you can also find a first aid for a stains on leather. The care products do not give a guarantee on the leather, but with proper maintenance the consumer will enjoy his furniture longer.

Important basic information for each type of leather; do not put these in direct sunlight in connection with discoloration. And ensure good humidity in the house to prevent dehydration of the leather. Do not place the furniture in the immediate vicinity of a heat source.

LCK Nederland BV

+31 571 270 327

klantenservice@lcknederland.nl

It's not possible to order single leather skins.



7003 | Beige
BD000259



7007 | Sand
BD000260



7009 | Pebble Stone
BD000265



7031 | Mustard
BD000266



7048 | Old Blush
BD000263



7052 | Light Grey
BD000264



7064 | Moss Green
BD000262



7096 | Elephant
BD000261



7098 | Antracite
BD000258

BODILSON

Frankfurtstraat 41-43

1175 RH Lijnden

+31 (0)88 444 06 00

sales@bodilson.com

KVK 69725160

BTW NL857985413B01